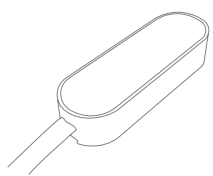


HAN SENSOR

USER GUIDE



2. The HAN Sensor will now start searching (up to 15 minutes) for a ZigBee network to join.
3. Make sure that the Futurehome Smarthub is set in zigbee pairing mode.
4. While the HAN Sensor is searching for the Zigbee network to join, the LED flashes red.



5. When the LED stops flashing, the HAN Sensor has successfully joined the Zigbee network.

Placement

Place the HAN Sensor indoors at a temperature between 0-50 °C.

The HAN Sensor must be placed close to your power meter (AMS). It must not be placed inside metal cabinets, as it might weaken the radio signal.

Mounting

To mount the HAN Sensor, first clean the desired surface before mounting.

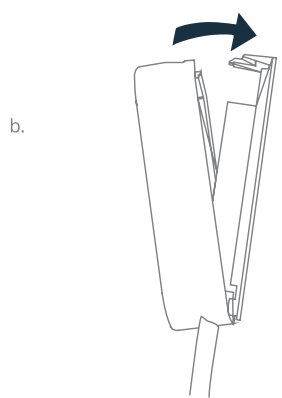
The HAN Sensor can be mounted either directly to the wall next to the power meter, or if the power meter is enclosed in a metal box, on the box itself, using the tape already applied to the back of the HAN Sensor. Press firmly to secure the HAN Sensor in place.

Resetting

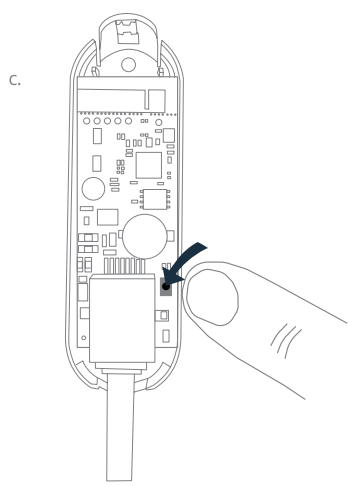
Resetting is needed if you want to reconnect your HAN Sensor, or if you need to perform a factory reset to fix abnormal behaviour.

STEPS FOR RESETTING

1. Open the casing of the HAN Sensor.



2. Press and hold the menu button until the LED flashes red, then release the button again.



3. After a successful reset the red LED will start flashing, which indicates network search.

Fault finding

If the HAN Sensor does not send correct meter data, confirm that the connector is inserted correctly in the meter.
If you still don't get any data, contact your grid owner, and assure that the HAN interface is enabled on your meter.

In case of a weak or bad signal, change the location of the HAN Sensor or strengthen the signal with additional network devices, like a smart plug.

If searching for the Smarthub has timed out, a short press on the HAN Sensors button will restart it.

Visit support.futurehome.no for further help.

CE certification

The CE mark affixed to this product confirms its compliance with the European Directives which apply to the product land, in particular, its compliance with the harmonized standards. A complete declaration of compliance can be found at products.futurehome.io.



IN ACCORDANCE WITH THE DIRECTIVES

- Radio Equipment Directive (RED) 2014/53/EU

- Low Voltage Directive (2014/35/EU)

- RoHS Directive 2015/863/EU amending 2011/65/EU

Other certifications

Zigbee Home Automation 1.2 compliant

All rights reserved

Futurehome AS assumes no responsibility for any errors, which may appear in this user guide. Furthermore, Futurehome AS reserves the right to alter the product, software, and/ or specifications detailed herein at any time without notice.

All trademarks listed herein are owned by their respective owners.

Copyright © Futurehome AS

Distributed by Futurehome AS
P.O. Box 72
0801 Oslo
Norway

Product Description

When the HAN Sensor is paired to the Futurehome Smarthub and connected to the power meter (AMS), it will provide real-time energy data that can be viewed in the Futurehome App.

The HAN Sensor is made to work with all new AMS meters in Norway. See products.futurehome.io for a complete list of supported meters.

Precautions

Do not remove the product label as it contains important information.

Getting Started

The HAN Sensor requires no special assembly and it is powered by the power meter (AMS). It comes equipped with a HAN cable to connect it to the power meter (AMS)'s HAN interface.

1. Insert one end of the cable into the HAN port on the power meter (AMS). Consult your meter's manual for the exact location of the port.